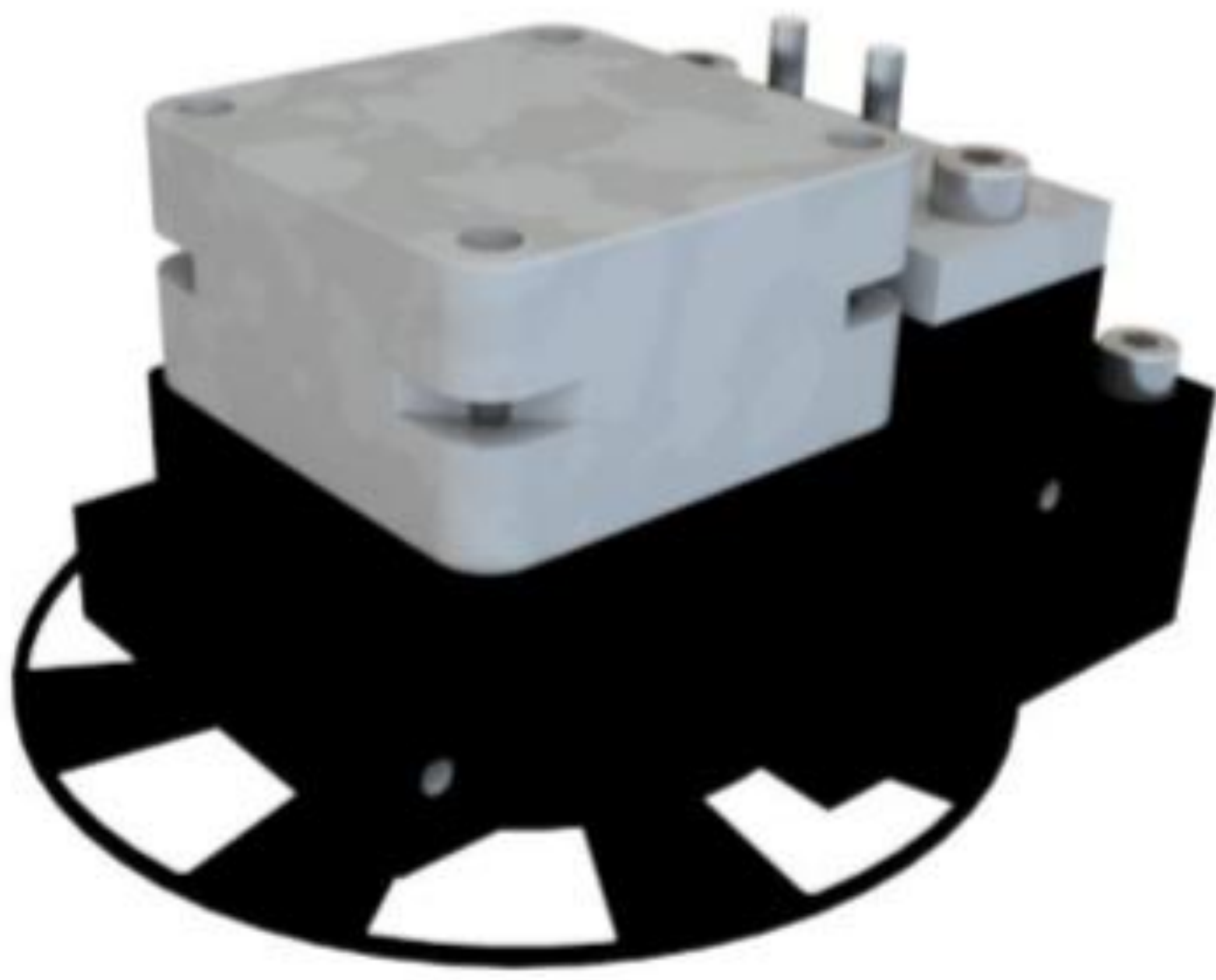


# SCIENTA ONLINE COAT WEIGHT SENSORS



- ✓ Double sided or single sided NIR
- ✓ Non-contact sensors
- ✓ Connection to sensor using Profibus or Modbus fieldbus interface
- ✓ More accurate online measurement with same-spot detection



## MEASURING METHOD

The Scienta NIR absorption-based sensor series 7235-C is a single sided, 2-channel InGaAs detector-based Coat weight sensor for online use. The sensor measures the infrared light absorbed by different wavelengths.

The sensor can be supplied with 4-channels for multi-material analyses. All channels are measured simultaneously using a same-spot technology and micro-optical receivers.

## BENEFITS

to process applications such as paper, board, nonwovens, foils, resin impregnation, laminating etc.

- Non-contact measurement
- Service free construction
- Easy and convenient to install and operate
- Full range of scanners available
- Easy calibration and setup
- More accurate on-line measurements
- Faster on-spec quality and reduced start up waste
- Reduction in rejects due to high performing measurements
- Minimization of energy consumption by accurate and reliable Coat Weight measurements and controls
- Machine speeds can be increased on drying limited pulp and paper machines

## TECHNICAL SPECIFICATIONS

Sensor Type	7235-C
Method	NIR - MIR
Construction	Single Sided
Range	5 – 100 g/m <sup>2</sup>
Accuracy	0,15 g/m <sup>2</sup> (2 σ)
Repeatability	0,01 g/m <sup>2</sup> (2 σ)
Recommended measurement distance	100 mm
Power consumption	+24V, 1A
Installation	Scanning/Fixed

Sensor Type	7235-C
Measurement Resolution	0,02 g/m <sup>2</sup>
Interface Options	Profibus DP
	Modbus RTU
	USB
Environmental Conditions	10 - 60 °C 10 - 95 % RH
Liquid Cooling	Optional