

# MORFI COMPACT

**NEW VERSION**

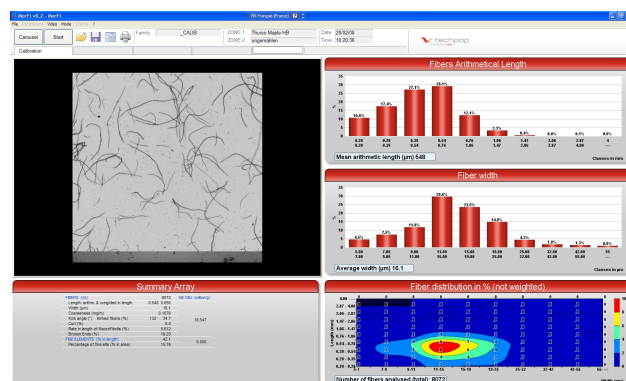
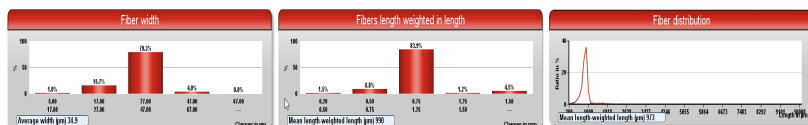
## AUTOMATIC SAMPLE DILUTION CONSISTENCY RECALCULATION

### INNOVATION FOR PAPER

### A POWERFUL, LOW COST & COMPACT SOLUTION FOR PULP MORPHOLOGY MEASUREMENTS



The MorFi Compact is specifically designed for intensive laboratory use and provides a complete interface for the treated data display. This slimmed down version of the MorFi Lab unit offers identical optics & flow cell measurement characteristics to ensure a blockage free process control as well as measurement accuracy. The interface gives a complete display of the treated data and makes it possible to recalculate this data to highlight different features. The data can be saved and exported to other computer programs.



### The MorFi Compact Offers Complete Fiber & Shive Morphology Characterization

#### FIBERS

Average & Distribution for  
Real Length Measurements  
Weighted Length Measurements  
Width Measurements  
Kinked and Curled Fibers  
Fiber Broken Ends  
Macrofibrills

#### FINE ELEMENTS

Average & Distribution for  
% in Area  
% in Length  
Number per gram

#### SHIVES & VESSELS

Average & Distribution for  
Length  
Width  
Area  
% area / fibers  
Number per gram

**RUGGED CONSTRUCTION FOR  
INTENSIVE USE**

**ONLY 3 MINUTES FOR A TYPICAL  
FIBER MEASUREMENT**

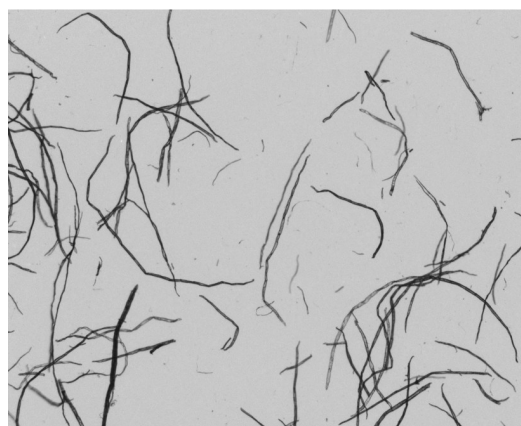
#### ISO/FDIS 16065-2

#### User Friendly Software

- » All parameters adjustable including fibers & fines definitions
- » Instant data recalculation using new parameter values (no time limit on data history)
- » Real time fiber images displayed on screen as well as data acquisition
- » Full data exportation & multi test exportation for easy result analysis under Excel
- » Easy to understand histograms, arrays and curves
- » Images saving ability
- » Three passwords protect user authorization levels

#### Portable

- » 110V or 220V power connection
- » Water & air connection not needed (except if dilution system used)
- » Light weight with aluminium case
- » Operates with a laptop computer



#### TECHPAP SAS

CS 90251 - 38044 Grenoble cedex 9

Tél. +33 (0)4 76 51 74 75 - Fax +33 (0)4 76 42 05 04

www.techpap.com - techinfo@techpap.com